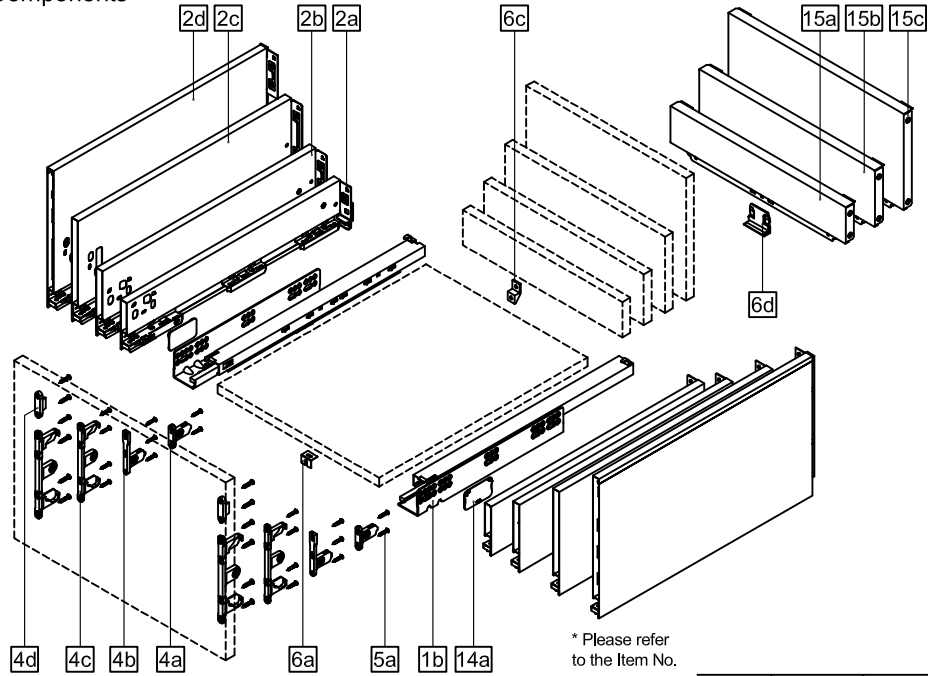




StrongMax PUSH 300 - 550 mm

Components



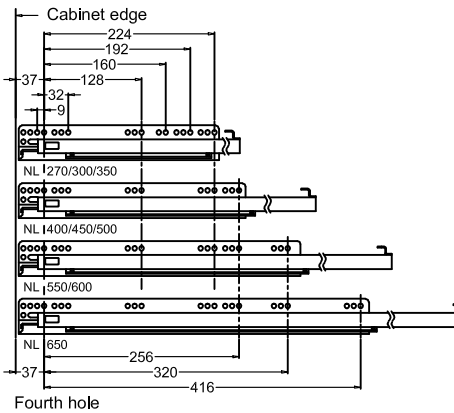
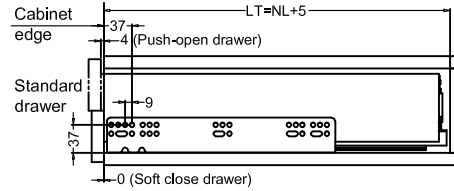
* Please refer to the Item No.

1b. Cabinet profiles L/R	5a. Front fixing-brackets screw (Ø4x17)
2a. 89 Drawer Sides L/R	6a. Front fixing (for wide drawer)
2b. 121 Drawer Sides L/R	6c. Back fixing (for wide drawer)
2c. 185 Drawer Sides L/R	6d. Metal back fixing (for wide drawer)
2d. 249 Drawer Sides L/R	14a. Side cover plate
4a. 89 Front fixing-brackets	15a. Metal back height 89
4b. 121 Front fixing-brackets	15b. Metal back height 121
4c. 185 Front fixing-brackets	15c. Metal back height 185
4d. 249 Front fixing-brackets	

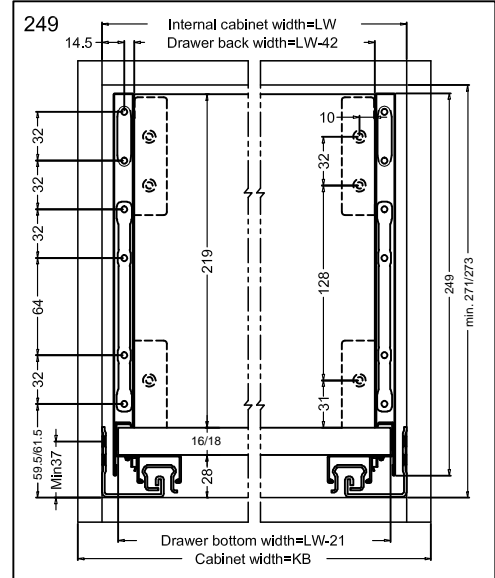
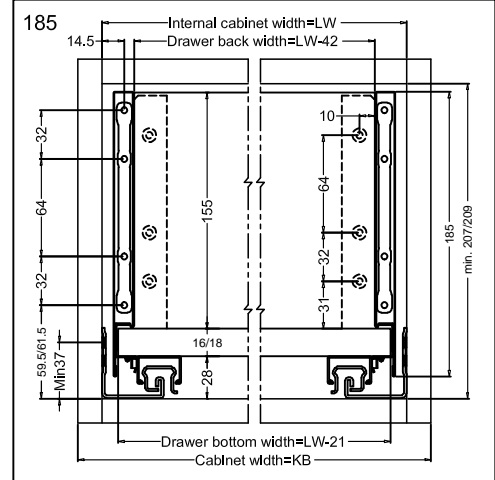
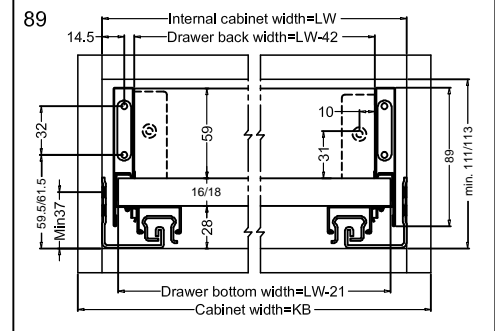
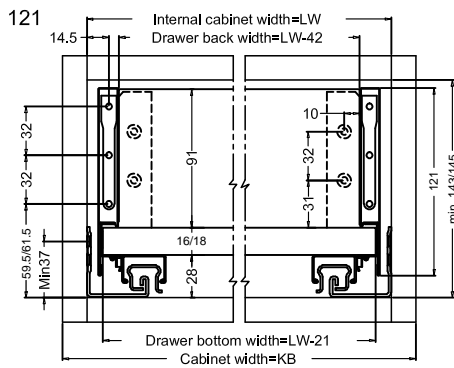
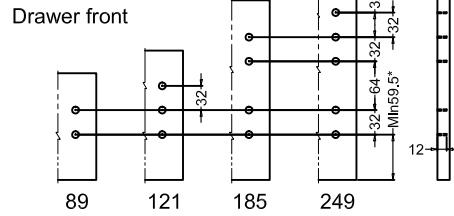
Nominal length	Internal drawer length	Min. Installation length of drawer
300mm	274mm	305mm
350mm	324mm	355mm
400mm	374mm	405mm
450mm	424mm	455mm
500mm	474mm	505mm
550mm	524mm	555mm

Installation dimensions (mm)

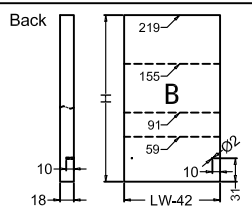
Nominal slide length = NL Internal cabinet depth = LT



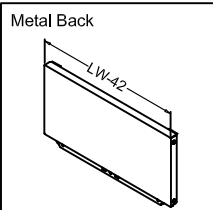
Selection	Drill Size
Wood screw	Ø2 x 12
Anchor bolt	Ø10 x 12



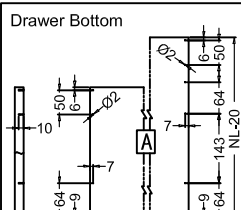
Drawer Back and Bottom Dimensions (mm)



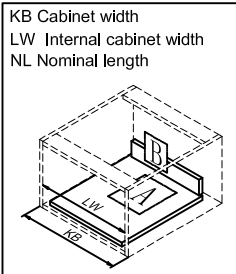
Type	89	121	185	249
H	59	91	155	219



KB ≥ 800
Metal back fixed

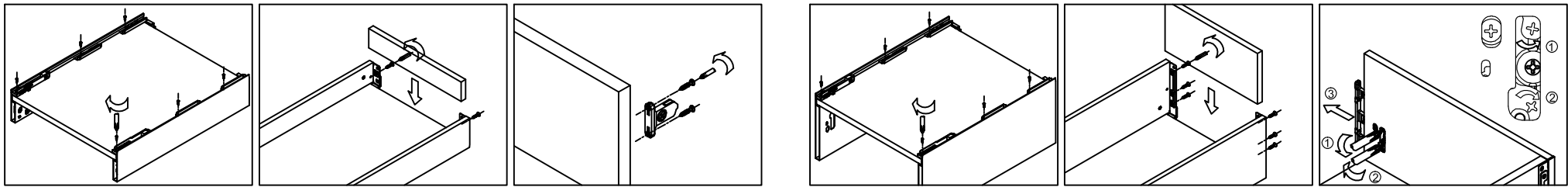


270-400 450-650



Assembly removal and adjustment

Assembly



Bottom assembly

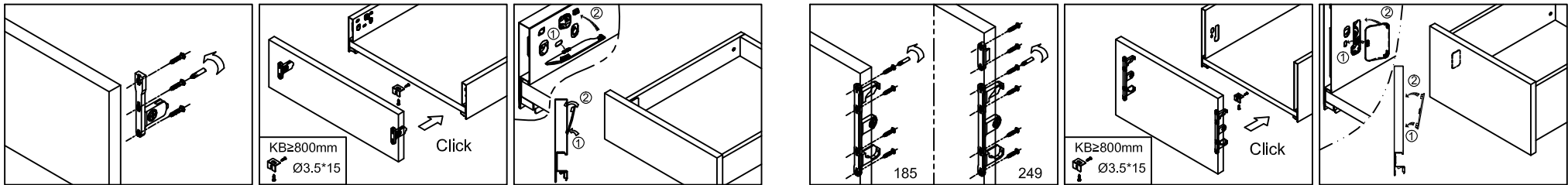
Back assembly

Front bracket assembly

Bottom assembly

Back assembly

249 Front fixing-bracket release



Front bracket assembly

Front panel assembly

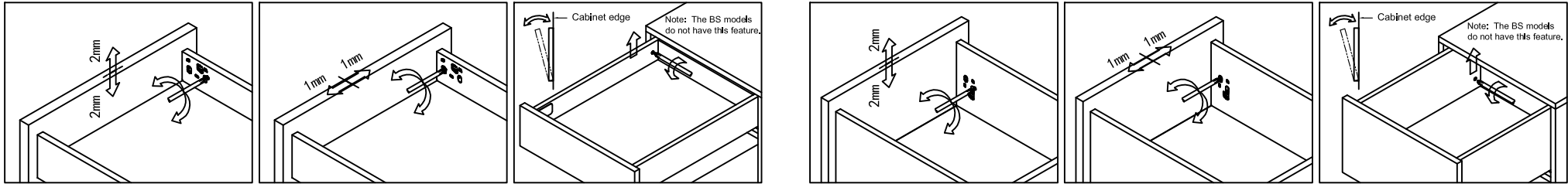
Side panel Cover assembly

Front bracket assembly

Front panel assembly

Side panel Cover assembly

Adjustment



Up&down adjustment

Left&right adjustment

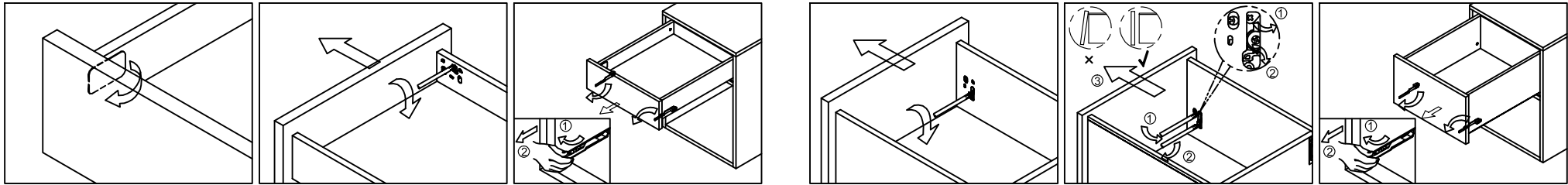
Tilting adjustment

Up&down adjustment

Left&right adjustment

Tilting adjustment

Removal



Remove the cover and pull out

Front panel removal (89&121)

Drawer removal

Front panel removal (185)

Front panel removal (249)

Drawer removal