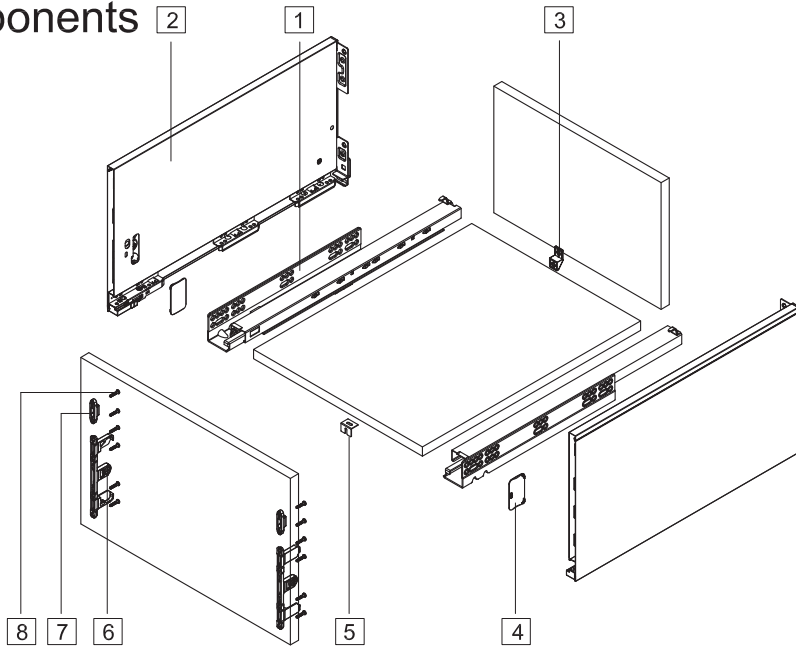


StrongMax 16 H249 NL 270 - 650



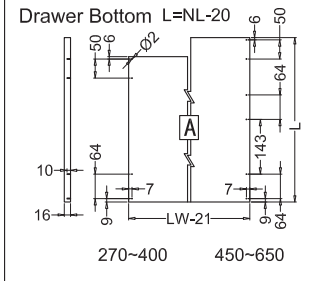
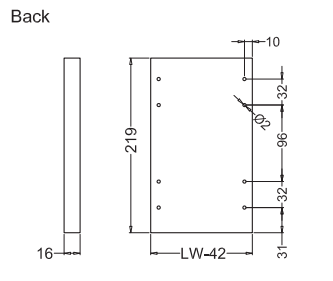
Components



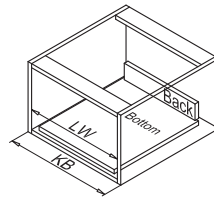
1. Cabinet profiles: L/R	
2. 249 Drawer profiles: L/R	
3. Back fixing (for wide drawer)	
4. Side cover plate	
5. Bottom fixing (for wide drawer)	
6. 185 Front fixing-brackets	
7. 249 Front fixing-brackets	
8. Front fixing-brackets screw (Ø4x17)	

Nominal length	Internal drawer length	Min. installation length of drawer
270mm	244mm	275mm
300mm	274mm	305mm
350mm	324mm	355mm
400mm	374mm	405mm
450mm	424mm	455mm
500mm	474mm	505mm
550mm	524mm	555mm
600mm	574mm	605mm
650mm	624mm	655mm

Drawer Back and Bottom Dimensions

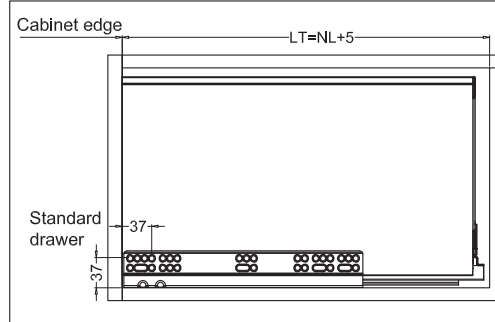


KB Cabinet width
LW Internal cabinet width
NL Nominal length



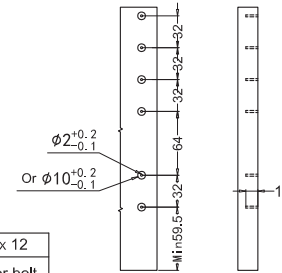
Installation dimensions (mm)

Nominal slide length=NL



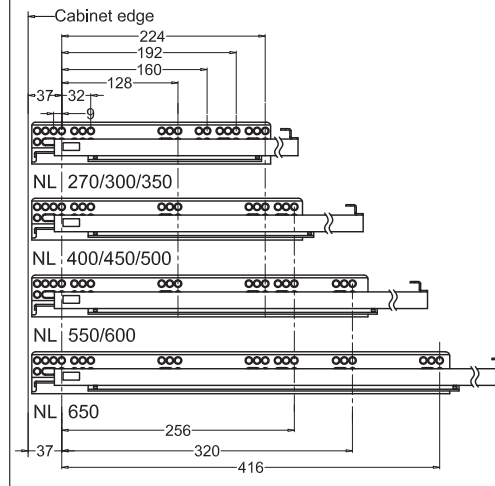
Drawer installation dimensions (mm)

249 Drawer front



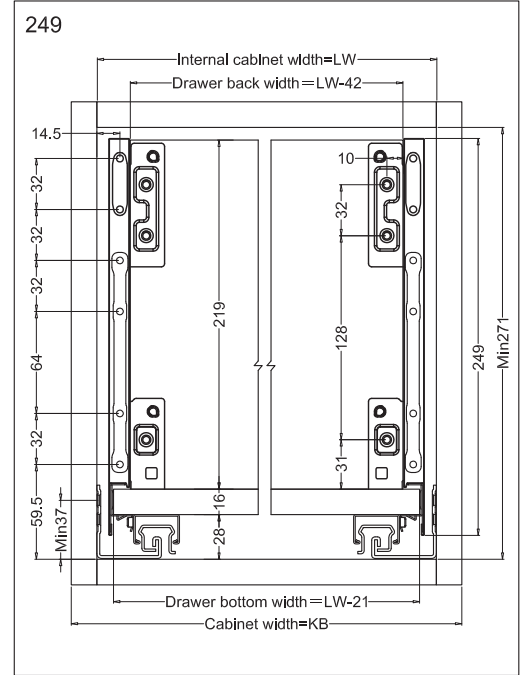
Ø2 x 12	Ø10 x 12
Wood screw	Anchor bolt
Ø4 x 17	Ø10.3 x 10

Screw positions of the sides



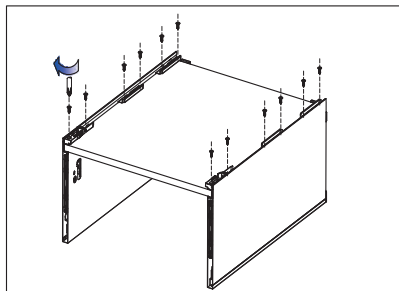
Drawer installation dimensions (mm)

LW=Internal cabinet width

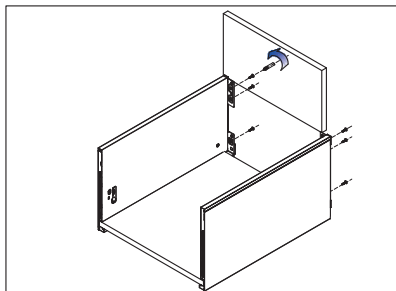


Assembly, Removal and Adjustment

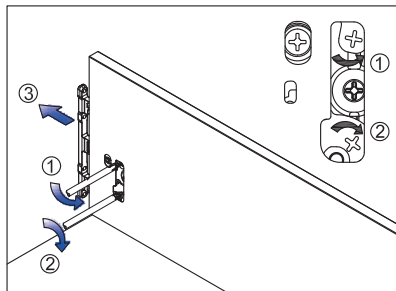
Drawer assembly



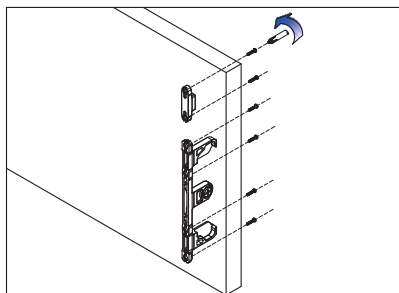
Bottom assembly



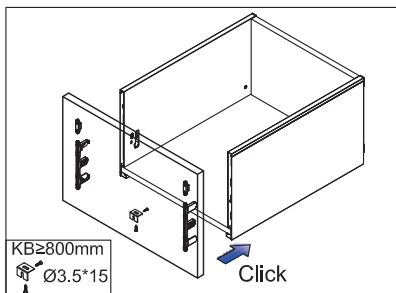
Back assembly



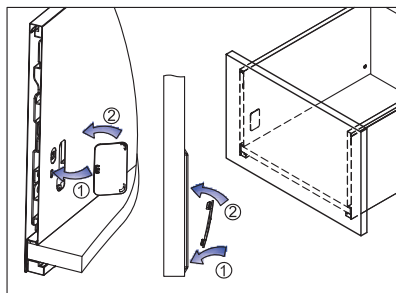
Front bracket release



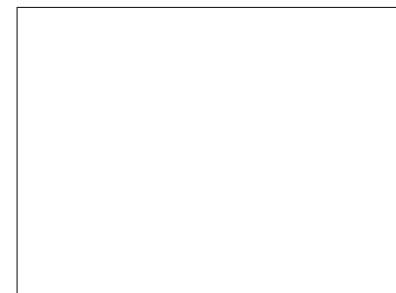
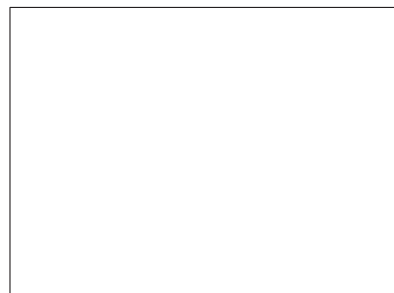
Front bracket assembly



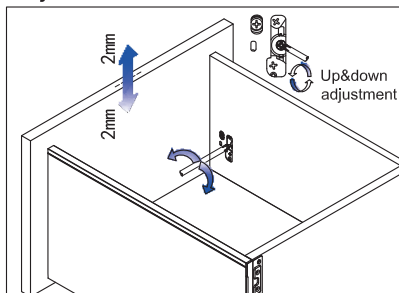
Front assembly



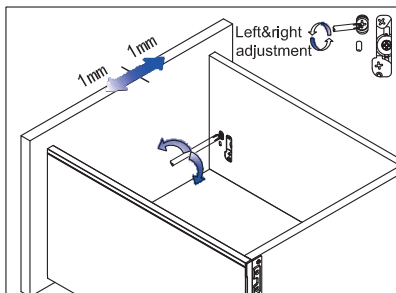
Inside Wall Cover assembly



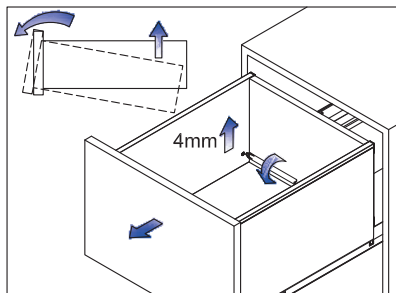
Adjustment



Up&down adjustment



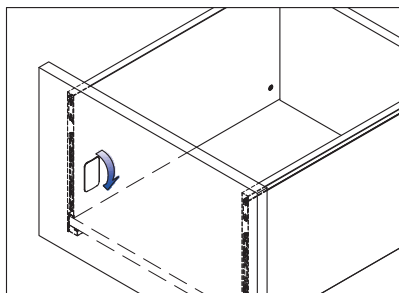
Left&right adjustment



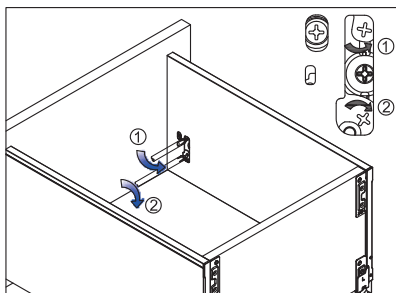
Front slope angle adjustment



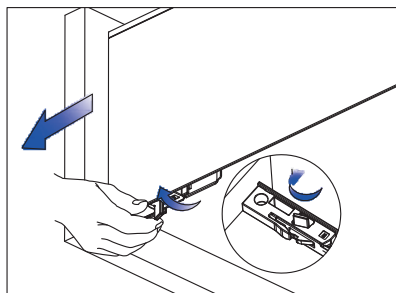
Removal



Tip up the cover and pull out



Removal drawer front



Removal drawer

